

बेजोड़ मजबूती बनाये आपका विश्वास



ADARSH SALES PVT. LTD.

*CORRESPONDENCE:

C/O ADARSH FURNITURE CENTRE,
REWA ROAD, SATNA (M.P),
INDIA
PIN – 485001
MOB- 9425812621, 9977155591
EMAIL – aspl2009@yahoo.in
WEBSITE- www.adarshply.com

*WORKS:

NH-75, SATNA – PANNA ROAD,
IN FRONT OF BAGRI PETROL PUMP,
VILL. HARDUA MAJHOL, P.O SITPURA,
SATNA (M.P), 485441
INDIA

*COMPANY DETAILS:

- LEGAL NAME – ADARSH SALES PVT. LTD.
- CONSTITUTION OF BUSINESS – PRIVATE LIMITED
- DATE OF INCORPORATION – JUNE 01, 2009
- GST REGISTRATION NO. – 23AAHCA7348H1ZO
- PAN NO. – AAHCA7348H

*BANK DETAILS:

A/C NO- 50095270622
INDIAN BANK (ALLAHABAD BANK)
SME – FINANCE BRANCH, SATNA (M.P)
IFSC CODE – IDIB 000 S 595



***OVERVIEW:**

Quality and dependability are the things that we try to be known for. As an organization, we direct our endeavours towards constant advancement and maintainable utilization of characteristic assets – while holding the quality that we are perceived by.

We **ADARSH SALES PVT. LTD.** is one of the premier manufacturer and supplier of PLYWOOD, DOORS & BLOCK-BOARDS is known for its extraordinary quality of products and exceptional service to its clients, distributors, and dealers. With the intention of quality first **A-ADARSH PLY** has come to represent a trusted brand with immaculate product integrity and market goodwill. Today, the company has a rock-solid foundation of state-of-the-art machinery and a devoted nationwide network of offices, distributors, dealers.

The business commenced with the establishment of our firm “Adarsh Furniture Centre” on November 13, 1982.

Adarsh Furniture Centre is the oldest Furniture shop in the Satna district. Since 1982 we maintain our dignity and discipline in manufacturing top-quality products. With the increase in demand for Plywood and Flush Doors, Adarsh Sales Pvt. Ltd. was incorporated in 2009 to grab the opportunity to provide the best calibre products to the market.

Since the origin of our organization, it has been our undertaking to stay at the cutting edge of advancement, and embrace the changing inclinations of the Indian shopper wholeheartedly. It is thus that we have continually endeavoured to add new items and administrations to our current item offering. We furnish our clients with a believed wellspring of top calibre, convenient conveyance and novel arrangements made with manageability. We trust in



building dependable connections by offering greatness in assistance.

We accept the fact that "A house is a fantasy that needs to come true". We endeavour to give our clients the Best-in-Performance items that are reasonably sourced, top-notch, and stylishly engaging so their fantasies work out.

The company's products occupy an enviable position in the Indian marketplace and have multifarious applications – Ranging from household to buildings to construction. It is one of those plywood company that believes in Consumer Satisfaction. The company's in-house research and technology ensures not just consistency in product quality but also continuous improvements in products, processes, and application areas. Our R&D ensures constant improvement of existing product and innovation of new ones to offer better, offer more to our customer. Moreover, our process is eco-friendly and energy-efficient with an in-house seasoning plant, measures that ensure the health and safety of our manpower. Our in-house production of resin helps in stronger bonding and increase the durability of the product and making the product waterproof.

We believe that quality is not an act, it is a habit, and throughout our journey, we only focus on manufacturing quality products. Each batch that bears the **A-ADARSH** name is checked as per BIS norms and EUROPEAN STANDARDS before being released in the market. At A-Adarsh Ply we have always believed that our quality and service will help us succeed. Adarsh ply products enjoy the trust, confidence and patronage of all their customers and influencers. Our affiliation, association and dedication to quality procedures and willingness to innovate and be the best have carved a niche in the hearts and mind space of all our customers and trade partners.

Today **A- ADARSH PLY** is the unprecedented choice of Architects, Interior Designer & contractors. They strongly recommend our products for transforming ordinary steel and concrete structure to the expression of one's personality. We are guided by a simple philosophy of adding more value for money, products and at the same time, improving upon our existing product portfolio through extensive research and most important customer's feedback. Every product is strictly inspected because: **“WE NEVER COMPROMISE WITH QUALITY”**.





***OUR JOURNEY:**

ADARSH is derived from a Hindi word meaning Ideal or Perfect. Maintaining the dignity of our name we are perfect with what we do.

The ADARSH group came into existence in the year 1982 under the aegis of Shri. Hanuman Prasad Gupta, a leader, a visionary and a philanthropist. The group began its operation by stepping into the furniture industry by the name of ADARSH FURNITURE CENTRE. Adarsh Furniture Centre was known as a local furniture shop and a furniture manufacturer. We were the first furniture shop in the Satna district. We used to manufacture furniture in the basement of the showroom at that time.

With the increase in demand, we need to increase our production, therefore in the year 1985, we shifted our workshop at the local industrial area and started a new firm by the name of “Wood Works”. This firm used to manufacturer a decent quantity of products to meet our requirement and to supply many ongoing projects at that time.

Adarsh Furniture Centre has also executed many tenders with companies like L&T, LIC, Heidelberg cement, MP Birla Corp, Reliance Cement, Ultratech Cement, Shere Punjab Jewellers Satna and many more.

Our other two concerns “Adarsh Marketing” and “Adarsh Distributors” had been known for the authorized dealerships of Hindustan Unilever Ltd., Nestle and Nokia.

Anticipating future increased market demand for Plywood, Flush Door, and Block boards, the group diversified itself and laid its manufacturing Ply, Doors and Boards and their Allied products. That’s when ADARSH SALES PVT. LTD. was incorporated in 2009 and being the game-changer in the flush door and plywood industry. The company is

committed to introducing innovative products to the Indian Interior infrastructure industry. A perfect blend of specialized prevalence joined with a wide scope of structure spread over a rich palette settle on ADARSH items a perfect decision.

In February 2019, we started our new venture Adarsh Wood Craft with a vision to manufacture and supply wooden furniture to the Indian market and foreign market as well. Our firm consists of experienced employees which are connected with us from the beginning of our business, contributing a lot towards its growth.

Our divergent concerns include:

- ADARSH FURNITURE CENTRE
- ADARSH WOOD CRAFT
- WOOD WORKS
- ADARSH DISTRIBUTORS

Impelled by the soul of consistent development, advancement, upheld by a promise to greatness, the group today is a multidimensional organization with a solid nearness in segments as different as – furniture, plywood & flush doors, and interior designing and execution.



***OUR MISSION:**



To build the best product. To be the first preference of customers in terms of quality, finish and durability. To prove to the market that quality will always be preferred over price.

***OUR VISION:**



To provide a world-class lifestyle experience to the clients. To be on the top of the market in terms of technology, advanced machinery and continuous innovation and research.

***OUR DEDICATION:**

We are always dedicated to provide the best product to the market. We are committed to manufacturing the product to maintain the dignity of our name. A-ADARSH is presented with belief that producing branded and quality-focused product will possess excellence and will match any international standards. Our principle of “customer first” makes us unique in the market. We have maintained our product quality standards, ever since our inception.



***OUR TEAM:**

We have service support of an efficient workforce who work in close coordination with each other and ensure that the goods supplied are in tandem with the international standard. Their customer-oriented approach and enthusiasm for manufacturing the best are helping the organization to achieve its goals. Their motto is to deliver the experience, not service. Our dedicated employees are experts in their respective jobs and their sincerity and dedication have helped a lot in reaching new heights.



*WHY US:

- Eco-friendly manufacturing
- Value for money
- Customer focus
- Teamwork
- Excellence
- Business ethics
- Trust
- Promised delivery
- Product performance
- Efficient logistic support
- Integrity



*OUR CORE VALUES:

In the modern era, where everyone is running to capture the market share by providing the low-quality product at the minimum price regardless of quality, We want to establish our share by delivering the quality.

PRODUCT HONESTY:

To raise high our product quality, we carefully select the best raw materials from certified vendors who are master of their field. Our raw material is blessed to receive withstand moisture, outrageous climate conditions and bug invasion. The entirety of our items is fabricated with severe adherence to the norms authorized by the BIS.

DEPENDABILITY:

Our state of the art plants has in-house testing labs and thorough groups dependent on leading ordinary quality checks at all phases of the manufacturing cycle. Our commitment towards quality has enabled us to offer assurance on our products.

ASSURANCE:

Quality at ADARSH is the most important practice of an entire process. At every stage of the production cycle, we follow various types of quality checks to release the best in the market. We are backed by an experienced quality control department that supports us to conquer our mission. Along with quality service also defines the attribute of the product. We ensure timely delivery and prompt service to our clients.



***FROM THE MD's DESK:**

Welcome to ADARSH SALES PVT. LTD. Our core focus is always on delivering the best to the customers. We focus on delivering quality over price. We believe that better quality is cheaper as compared to low-priced products in a long time race. We have learned to perform business ethically. We are backed by our principles and core values which we keep in mind before conducting business.

In today's world of uncertainty especially for the industrial world with constantly changing requirements and unflinching requests, we are decidedly ready to furnish you with new and creative solutions. We practice suggesting the correct items for your goal needs. In the course of recent years, we have re-evaluated this company from an unadulterated ply single material (plywood) producer into a one-stop building arrangement supplier for our clients looking to make world-class workplace and homes. At a point we gained ADARSH, we did so not just to catch a short-lived exchange opportunity that would have expected us to play the game better, we did as such intending to change the game itself. In this modern era, with modern technology where new products are being introduced in the market which is claiming to be a substitute for plywood, I believe that Plywood will hold on in the market for a long period and customers will also gain the knowledge about choosing quality over price. It is sometimes very disappointing that in today's modern world, many customers fall for the cheaper price of the product regardless of better quality and durability. Our motto is to aware the buyers of correct product knowledge and to divert their focus on buying the supreme quality and not running for the cheaper quality. We always wanted to be recognized for our quality and our workmanship and dreams of lighting up the name of our company and our country in the whole world.

I invite you to experience the products and solution that we have an offer and to become a part of our family. Welcome once again, to ADARSH SALES PVT. LTD.



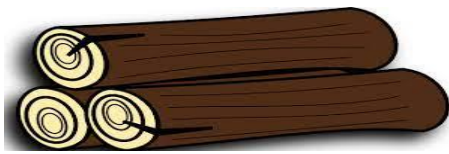
SHAILESH GUPTA
DIRECTOR

*PROCESS:

We manufacture products that meet all stringent ecological standards. Each sheet experiences thorough quality check before being sent to market. All things considered, we invest heavily in offering our shoppers unrivalled quality items, while remembering the “esteem for cash” remainders.

1. INSPECTION OF LOGS

Each and every logs of CLASS 1 grade is being personally inspected for best quality and durability.



2. Cutting

Based on requirement inspected logs are being cut to size.



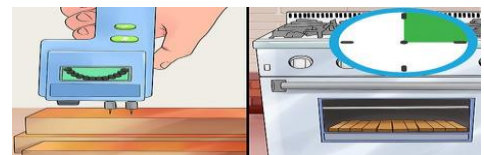
3. SEASONING OF WOOD

Woods are put inside our Inhouse seasoning chambers to remove the moisture. Excessive moisture can let the product swell. Seasoning also kills bacteria and micro organism. This process also includes chemical treatment and several other treatments.



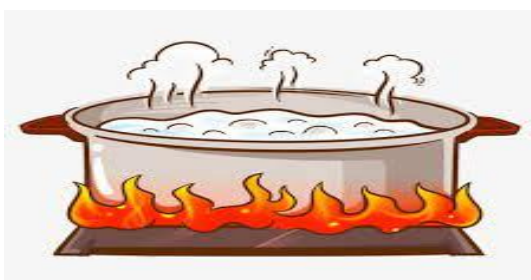
4. DRYING

Drying reduces the moisture content. Drying is done at a certain temperature. It also killed the moisture content that may survive the seasoning procedure.



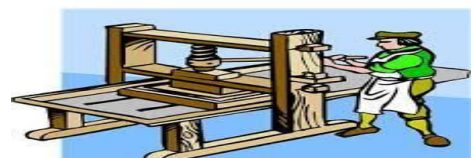
5. RESIN

A specially formulated resin is manufactured In house to ensure the quality, bonding and strength of the product. Resin plays an important role in the properties of the product.



6. PREPRESS

This unique process ensures a uniform spread of specially formulated resin and chemicals into every layer of plywood. The assembled plywoods are pressed under high pressure at ambient temperature for sufficient time to ensure stabilization of all layers and to achieve a warp-free strong bonding.



7. HOT PRESS

The plywood from pre-press is loaded into the hot press for polymerisation. Each board is put through a preset temperature and higher pressure to ensure uniform density and permanent bonding, resulting in a warp-free sheet.



8. CUTTING

The pressed product is cut horizontally and vertically according to the size.



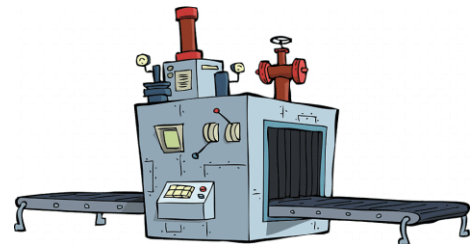
9. SANDING

An imported and fully automatic wide-belt sanding machine performs surface sanding on both sides of the plywood to give it a smooth surface.



10. DIPPING

A special Chemical is Spread all over the sheet to make the product termite and borer free.



11. LABORATORY TEST

A full-fledged R&D lab with the latest equipments and experienced scientists help in ensuring that every batch of resin and plywood is thoroughly tested for quality and consistency



12. INSPECTION

Each and every plywood is thoroughly inspected for quality bonding and finish before dispatching to various destinations to cater to the needs of end users.



13. DELIVERY

We offer promised and timely delivery to satisfy our customer and gain their trust.



*PRODUCT SAFEGUARDING:

Our manufacturing team guarantees supreme protection for every product. Our processing system and methods adapted by certain experiments and research allows us to offer the safeguarding of our products.

IN HOUSE RESIN:

Our in house production of resin used in the manufacturing process which contains specially formulated chemical which makes the product borer and termite resistance.

PREPRESS:

To maintain the quality of the product, we pre-press the veneers to apply protective chemical and vapourize moisture.

SEASONING PLANT:

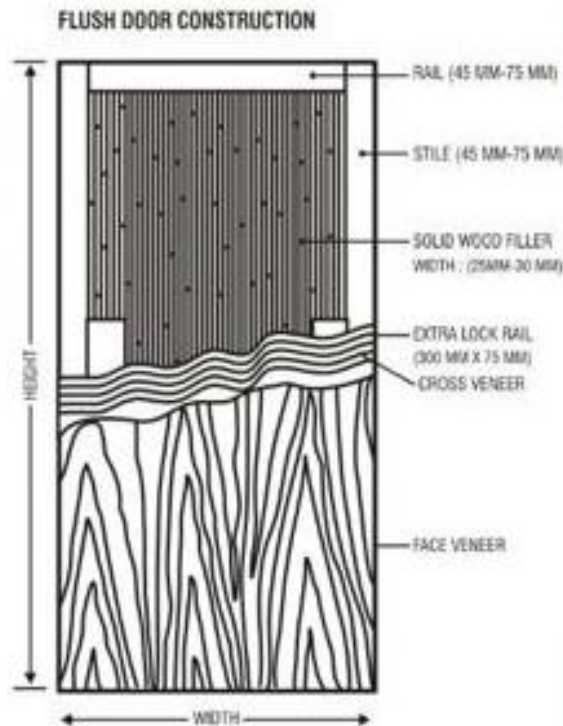
Kiln seasoning accelerates the process of **seasoning** by using external energy to drive the moisture out. our quality control department checks the moisture of lumber to avoid bending and control defects. Our plant contains 6 seasoning kilns for chemical treatment and moisture control. Chemical treatment helps in generating anti borer, anti-termite properties.

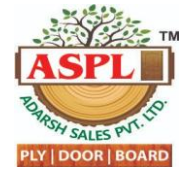
Here's how our practice of pre-press keeps us one step forward from our competitors.

PREPRESS	NOT USING PRE PRESS
The product is uniform and levelled	Chances of product bend
Helps in strong bonding	Weak bonding
Resin spreads uniformly	Resin evaporates
Eliminates core gaps	Increase chances of core gaps
Product density is uniform	Density is bumpy
Evaporates moisture	Moisture does not evaporate resulting in bending and warping
Stable during cutting and more calibrated	Shows chipping and usually less calibrated

*TECHNICAL SPECIFICATIONS:

S.NO	CONTENT	RESULTS
1	Moisture content	<8%
2	Flatness of Shutter	Not more than 6mm
3	Local Planeness	Not more than 6mm
4	Impact Intention	Not more than 0.2mm by weight of 0.5kg
5	Flexure Max 6mm	Deflection at max, load not greater than 1/30 of length & 1/15 of width. Deflection not greater than 1/10 of max deflection
6	Edge Loading a. Initial deflection b. Residual deflection	a. Not more than 0.2mm b. Not more than 1.5mm
7	Stock resistance	No visible damage after 25 blows of 5kg
8	Bucking a. Initial deflection b. Residual deflection	a. Not more than 40mm b. Not more than 5mm
9	Slamming of shutter	No visible damage after 50 drops
10	Misuse of shutter	No permanent deformation after the test
11	Varying Humidity	Dimension changes within ISS
12	End immersion	No delamination after immersion
13	Adhesion of pipes	Excellent
14	Glue adhesion	No delamination of the glue line
15	Screw holding strength	1000-1300 N
16	Specific gravity	0.60
17	Water absorption	<2%
18	Nail holding strength	>100kg





***PRODUCTS:**

"We enhance your life with world-class luxury".

With long stretches of forefront research, we offer a broad scope of Flush doors, Plywoods and blockboards that are dampness safe, resistant to termites and borer issues and some are additionally boiling water resistance making them adaptable for various applications.

ADARSH SALES PVT. LTD. manufactures products that meet all stringent ecological standards. Each sheet experiences thorough quality check before being sent to market. All things considered we at **ADARSH SALES PVT. LTD.** invest heavily in offering our shoppers unrivalled quality items while remembering the "esteem for cash" remainders.

Our **SANDWICH SERIES** is our innovation towards the plywood industry. The credit goes to the sincere efforts of our R&D department. This product is carpenter friendly and increases the strength of the product. In this series, we apply 3mm Branded HDHMR skin on both sides. This innovation provides the finish and properties of the HDHMR board and provides the strength of normal plywood. This also solves the problem of less screw holding capacity of HDHMR. Carpenters and engineers are praising this innovation.

Being environment cognizant we likewise offer an eco-friendly scope of Flush doors, Plywoods and blockboards that are manufactured environmental friendly lumber through friendly ranger service.

1. FLUSH DOOR: SANDWICH(IS:2202(PT-1)1999)

SANDWICH DOORS are the result of the innovation and dedication of our R&d Department. These Doors are constructed with 3mm HDHMR FACIA Skin on Both sides to provide a smoother finish. These doors provide the strength of normal flush doors and the finish of an HDHMR at once. We also provide an extra lock rail on both sides as extra support for modern technology locks. CNC Routing, DUCO, PU Paints are easily done in this segment for a smoother finish and high quality.



Unique features:

- *Boiling waterproof
- *Smooth surface
- *No warping or bending
- *Fungal, termite and borer treated
- *Superior Stability and durability
- *Absorbs less adhesive
- *Easy to paint
- *Dimensional accuracy
- *High stability strength
- *High shock and buckling resistance
- *Chemically treated and seasoned as per BIS
- *Zero defects in flexure and edge loading
- *Properties of HDHMR and strength of plywood

*Specifications:

Thickness available	35mm to 45mm
Size available	Available in all standard sizes
Frame width	75mm
Lock rail width	75mm (both side)
Adhesive for bonding	PF resin as per BIS standards.
Density	800-850 kg/cm ³
Moisture content	8-12%
Glue adhesion strength	Excellent
Resistance to misuse	Excellent
Water-resistance test	Confirms to IS:2202(pt-1) 1999
Warranty	Any manufacturing defects as per warranty certificate.
IS STANDARDS	IS:2202 (PT-1) 1999

***END USAGE: DOORS**

2. FLUSH DOOR: PREMIUM (IS:2202(PT-1)1999)

Our PREMIUM segment Flush Doors comes as per IS: 2202 PT-1 (1999) and BWP grade. It is constructed from seasoned and chemically treated Hard Wood. Fillers are also well settled and to absorb the right amount of resin and provide a smooth surface. We also provide an extra lock rail on both sides as extra support for modern technology locks. The top surface is finished with a high-quality Gurjan face. Sanding and Dipping, in the end, provide excellent finish and chemical treatment.



Unique features:

- *Boiling waterproof
- *No warping or bending
- *Fungal, termite and borer treated
- *Superior Stability and durability
- *Dimensional accuracy
- *High stability strength
- *High shock and buckling resistance
- *Chemically treated and seasoned as per BIS
- *Zero defects in flexure and edge loading

*Specifications:

Thickness available	30mm to 45mm
Size available	Available in all standard sizes
Frame width	75mm
Lock rail width	75mm (both side)
Adhesive for bonding	PF resin as per BIS standards.
Density	700-750 kg/cm ³
Moisture content	9-13%
Glue adhesion strength	Excellent
Resistance to misuse	Excellent
Water-resistance test	Confirms to IS:2202(pt-1) 1999
Warranty	Any manufacturing defects as per warranty certificate.
IS STANDARDS	IS:2202 (PT-1) 1999

*END USAGE: DOORS

3. SANDWICH PLY (IS:303) – FULLY WATERPROOF

SANDWICH Ply is considered to be the most exclusive product of ASPL. The multi-use of the item makes it quite possibly the most favoured brands on the lookout. Imported high-thickness lumber adds additional thickness and thickness to the item, which gives better toughness and dimensional security. Plus this plywood contains the properties of HDHMR and the strength of plywood, which makes it carpenter friendly and popular in the market. This handle is bubbling waterproof, which expands the life span of the utilize. The sandwich series are being praised well by our clients.



Unique features:

- *Boiling waterproof
- *Smooth surface
- *Face thickness 3mm or 5mm
- *Available with full-thickness
- *Chemically treated and seasoned as per BIS
- *Properties of HDHMR and strength of plywood
- *No warping or bending
- *Fungal, termite and borer treated
- *Superior Stability and durability
- *Absorbs less adhesive
- *Easy to paint
- *Dimensional accuracy
- *High stability strength

*Specifications:

Thickness available	19mm & 12mm (more up to 40mm)
Size available	Available in all standard sizes
Face	HDHMR
Core	All red hard core
Adhesive for bonding	PF resin as per BIS standards.
Density	Above 750 kg/cm ³
Moisture content	8-12%
Glue adhesion strength	Excellent
Resistance to misuse	Excellent
Water-resistance test	Confirms to IS:303
Warranty	Any manufacturing defects as per warranty certificate.
IS STANDARDS	IS:303

***END USAGE:** FURNITURE, PARTITIONS, SHIP FLOOR, WALL PANELLING, BOAT BUILDING, KITCHENS, RACKS, SHELVES ETC.

4. SUPREME PLY (IS:303) BWP

SUPREME Grade Plywood is high-quality Water Proof plywood. It is constructed from a red core (hardcore) with a soft core in the centre to increase its nail and screw holding capacity. It is constructed with PF resin which allows it to develop its waterproof properties. It is also constructed according to IS:303 norms. It is popular in the market for its strength and waterproofing.



Unique features:

- * Boiling waterproof
- * No warping or bending
- * Fungal, termite and borer treated
- * Superior Stability and durability
- * Dimensional accuracy
- * High stability strength
- * 15 layered ply for 19 mm (Additional 2 layers for other thickness)
- * 13 layered ply for 16 mm (Additional 2 layers for other thickness)
- * 11 layered ply for 12 mm (Additional 2 layers for other thickness)
- * High shock and buckling resistance
- * Chemically treated and seasoned as per BIS
- * Zero defects in flexure and edge loading

* Specifications:

Thickness available	19mm, 12mm, 9mm &6mm
Size available	Available in all standard sizes
Face	Gurjan (with dipping)
Core	All red hard core
Adhesive for bonding	PF resin as per BIS standards.
Density	Above 750 kg/cm³
Moisture content	8-12%
Glue adhesion strength	Excellent
Resistance to misuse	Excellent
Water-resistance test	Confirms to IS:303
Warranty	Any manufacturing defects as per warranty certificate.
IS STANDARDS	IS:303

END USAGE: FURNITURE, PARTITIONS, KITCHENS, RACKS, SHELVES ETC.

5. ECO-XL PLY: (IS:303) MR

With phenomenal highlights like high life span and mechanical strength, ASPL invests heavily in its ECO-XL Ply. This exceptionally strong pressed wood is an all-around preferred item because of numerous great credits like unrivalled screw holding limit, nail holding strength, uniform thickness, and significantly more. Aside from independence from distorting, it is water-safe It is constructed according to the IS:303 norms.



Unique features:

- *Boiling water resistance
- *No warping or bending
- *Fungal, termite and borer treated
- *Superior Stability and durability
- *Dimensional accuracy
- *High stability strength
- *15 layered ply for 19 mm (Additional 2 layers for other thickness)
- *13 layered ply for 16 mm (Additional 2 layers for other thickness)
- *11 layered ply for 12 mm (Additional 2 layers for other thickness)
- *High shock and buckling resistance
- *Chemically treated and seasoned as per BIS
- *Zero defects in flexure and edge loading

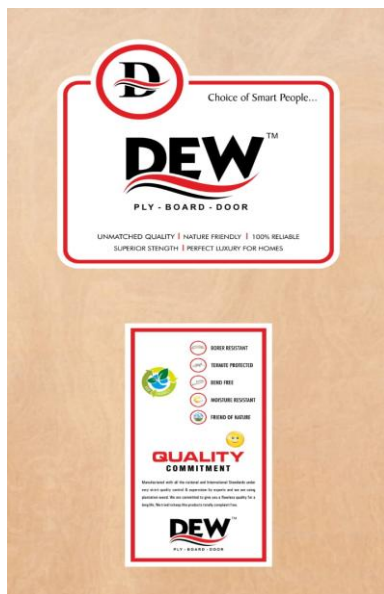
*Specifications:

Thickness available	19mm, 12mm, 9mm &6mm
Size available	Available in all standard sizes
Face	Gurjan (with dipping)
Core	Alternate core
Adhesive for bonding	MUF resin as per BIS standards.
Density	Above 650 kg/cm ³
Moisture content	8-12%
Glue adhesion strength	Excellent
Resistance to misuse	Excellent
Water-resistance test	Confirms to IS:303
Warranty	Any manufacturing defects as per warranty certificate.
IS STANDARDS	IS:303

END USAGE: FURNITURE, PARTITIONS, RACKS, SHELVES ETC.

6. SILVER PLY(IS;303) MR

SILVER Grade plywood is MR grade Commercial plywood with an alternative core according to the IS: 303 norms. It is constructed from an alternate core (hard and softcore) with MUF resin. This profoundly sturdy pressed wood is an all-around preferred item because of numerous grand credits like unrivalled screw holding limit, nail holding strength, uniform thickness, and considerably more. Aside from independence from twisting, it is likewise impervious to termites and drills.



Unique features:

- *Boiling water resistance
- *No warping or bending
- *Fungal, termite and borer treated
- *Superior Stability and durability
- *Dimensional accuracy
- *High stability strength
- *High shock and buckling resistance
- *Chemically treated and seasoned as per BIS

*Specifications:

Thickness available	18mm, 12mm, 9mm &6mm
Size available	Available in all standard sizes
Face	Gurjan (with dipping)
Core	Alternate core
Adhesive for bonding	MUF resin as per BIS standards.
Density	Above 500 kg/cm ³
Moisture content	8-12%
Water-resistance test	Confirms to IS:303
Warranty	Any manufacturing defects as per warranty certificate.
IS STANDARDS	IS:303

END USAGE: RACKS, SHELVES, SPEAKER CABINETS ETC.

7. SHUTTERING PLY (IS:4990) PF RESIN

ASPL shuttering ply is BWP grade plywood, treated with preservatives. Manufactured with selected hardwood, this ply withstands the load and forces encountered during the pouring of concrete and vibration. It renders a better economy for its repeated usage compared to other plywood varieties.



Unique features:

- *Boiling water resistance
- *More repetition than ordinary plywood
- *Tough bonding
- *Termite resistance
- *Chemically treated and seasoned as per BIS

*Specifications:

Thickness available	12mm
Size available	8*4
Adhesive for bonding	PF resin as per BIS standards.
Density	Above 700 kg/cm ³
Weight	30kg
Water-resistance test	Confirms to IS:4990
Warranty	Any manufacturing defects as per warranty certificate.
IS STANDARDS	IS:4990

END USAGE: CONSTRUCTION AND CIVIL WORKS.

8. SANDWICH BLOCKBOARDS:

SANDWICH Blockboard is ideal for home and office furniture, segments, and shades. The synthetically treated and prepared imported pine wood is handled in our processing plant.

It has been explicitly made with a magnificent nail holding limit that permits the Blockboard to be collected into any furniture easily.



Unique features:

- *Boiling Water Proof
- *Smooth surface
- *Face thickness 3mm or 5mm
- *Available with full-thickness
- *Chemically treated and seasoned as per BIS
- *No warping or bending
- *Fungal, termite and borer treated
- *Superior Stability and durability
- *Absorbs less adhesive
- *Easy to paint
- *Dimensional accuracy
- *High stability strength

*Specifications:

Thickness available	19mm & 25mm
Size available	Available in all standard sizes
Face	HDHMR
Filler	Pinewood
Adhesive for bonding	PF resin as per BIS standards.
Density	Above 700 kg/cm ³
Moisture content	6-8%
Glue adhesion strength	Excellent
Resistance to misuse	Excellent
Warranty	Any manufacturing defects as per warranty certificate.

END USAGE: FURNITURE, PARTITIONS, RACKS, SHELVES, SHUTTERS ETC

9. SUPREME BOARDS:

SUPREME Grade Block boards are waterproof block boards constructed with PF Resin, according to IS norms. Fillers inside these boards are filled to spread the resin equally which provide excellent bonding and strength.



Unique features:

- *Boiling Water Proof
- *Smooth surface
- *Available with full-thickness
- *Chemically treated and seasoned as per BIS
- *No warping or bending
- *Fungal, termite and borer treated
- *Superior Stability and durability
- *Dimensional accuracy
- *High stability strength

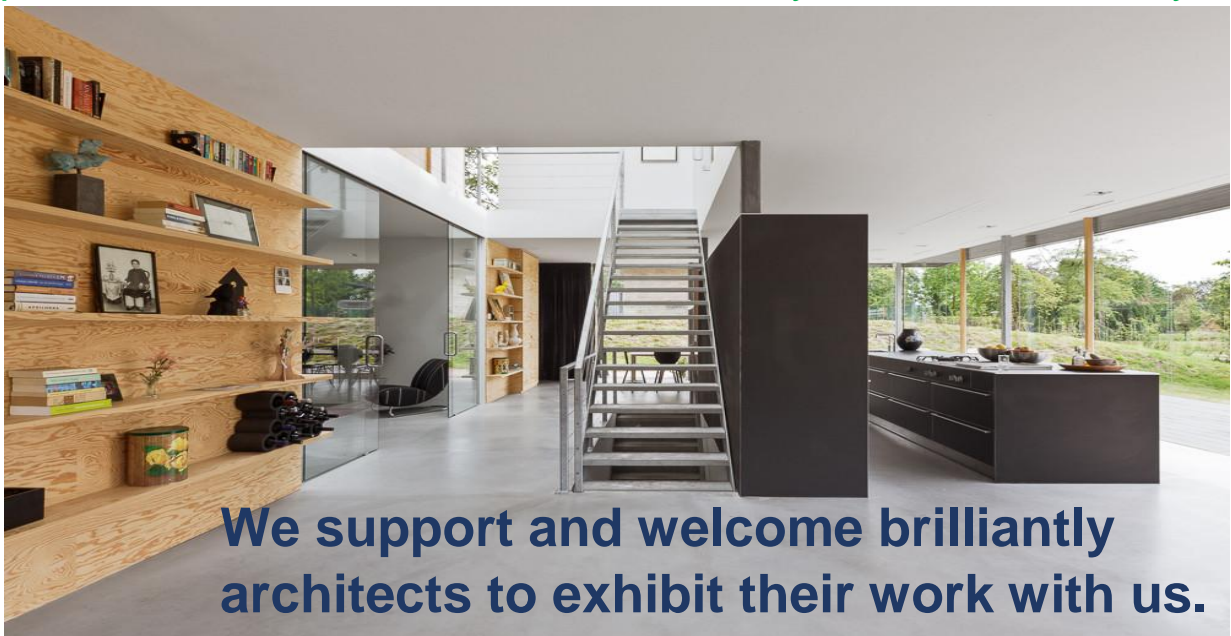
*Specifications:

Thickness available	19mm & 25mm
Size available	Available in all standard sizes
Face	Gurjan
Filler	Pinewood
Adhesive for bonding	PF resin as per BIS standards.
Density	Above 700 kg/cm³
Moisture content	6-8%
Glue adhesion strength	Excellent
Resistance to misuse	Excellent
Warranty	Any manufacturing defects as per warranty certificate.

END USAGE: FURNITURE, PARTITIONS, RACKS, SHELVES, SHUTTERS ETC.

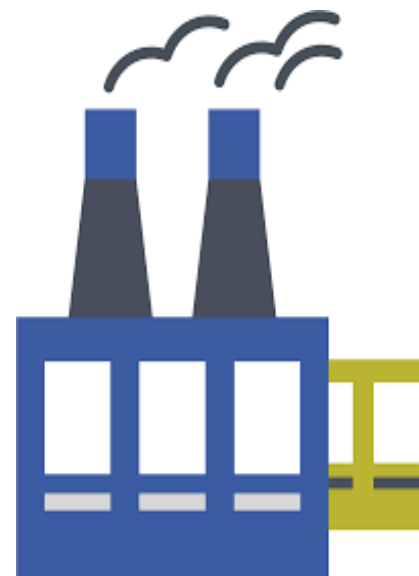
*ARCHITECT'S SECTION:

Our products are the ideal decision for each architect, whose extreme point is to make magnum opuses in design. It is applicable for both seasoned architects and aspiring talents. . With wide-ranging choices as far as examples of plywood in our product crate, we can enjoy every one of your requirements effectively. Along these lines, we prepare to offer shape to all your exceptional thoughts and plans and transform dreams into reality with ADARSH Ply.



*OUR INFRASTRUCTURE:

- 120000 SQFT CONSTRUCTED SHED
- 5 ACRES OF TOTAL LAND
- FIRE FIGHTING SYSTEM
- STORE
- PROPER AREA FOR STOCK
- ALL-ROUND CCTV SURVEILLANCE
- PNEUMATIC SYSTEM
- 24*7 DG BACKUP
- LOGISTICS SUPPORT
- 6 SEASONING CHAMBERS
- ADVANCED MACHINERY



***LOYAL CLIENTS:**

ADARSH has gotten one of the top choices as far as ideal quality products while it is the warm collaboration of our customers that has enlivened us to push ahead with a heartfelt of energy to draw out the best assistance in the present serious market. Subsequently, absolute professionalism is the thing that individuals have generally expected from us. We endeavour to keep acquainting the best items to oblige the necessities of every one of our clients with the most extreme productivity and satisfy every one of our guarantees.



***ETHICAL BUSINESS PRACTICE:**

We are bound by our set of principles which we follow whole heartily while conducting the business. We believe that our buyers should be provided with a genuine product and should feel cheated.

Likewise, we are proudly associated with legal and authentic vendors who are dedicated to providing us with quality products.

In our company, we practice business ethics to maintain discipline. We enlighten our employees to practice the morals and principles of the Firm. Our Human Resource department also governs the practice of business ethics in the company.

*RESEARCH AND DEVELOPMENT:



We believe that improvement is a continuous process to be the master player in the market and hence to achieve that our R&D team is working round the clock to provide the best experience to our customers. Their main focus is to keep us on top of the market by developing advanced products which are customer-friendly. The teamwork passionately to develop the products through the latest technology, adequate resources and the latest manufacturing process. In addition to this, we have a modern lab which assures the product examination and scope of developing the new products. We are backed by an experienced team of R&D to ensure that only the best is being sent to the market. Our SANDWICH SERIES is a well-known innovation of our team, which is ruling the market and is praised well by our clients.



***CORPORATE SOCIAL RESPONSIBILITY:**

For ASPL Corporate Social Responsibility is the proceeding with responsibility by business to carry on morally and add to financial turn of events while improving the personal satisfaction of the labour force and that of the nearby local area and society on the loose.

ASPL accepts that a Company is a family, a gathering of Professionals cooperating in concordance at all levels and grades as it's the main concern of the Company to take the best consideration of its most important resource.

For the Company, taking dynamic measures to keep its People cheerful and spurred is a ceaseless Process. These are almost in which ADARSH expands its corporate command past the customary.

As a part of forest supported industry, we are active in various plantation activities. We care to maintain the ecological balance of our ecosystem.



***ADVERTISING & MARKETING:**

Our experienced professional and experts handle the job of advertising and maintaining our presence in the minds of buyers. They practice new techniques and procedures to capture attention. They analyse the market and help us in understanding “what does the buyer want?”. They help us to anticipate the product according to the market. Their efforts of advertising benefit us to capture a large market share.



***PUBLIC RELATIONS:**

Our PR group is constantly occupied with improving the relationship with media and customers. They are reliably working by building the connections in Influence Company's success. The PR group is additionally dealing with our web-based media to publicize our profile by advancement and sites to contact our focused on crowd. They are helping us a great deal in producing exposure and upgrading our standing. They additionally assume a significant part in directing statistical surveying for the firm to comprehend the market better. They are very much associated with the authorities and agents which matters a ton for the organization.



***24/7 STAND-BY:**

Emergency contact information for Adarsh Sales Pvt. Ltd. :

Apoorv Gupta

Mob- 9977155591

Mob- 7223862222

Email- getapoorvgupta@gmail.com

